

5-AXIS DENTAL CAD/CAM MILLING MACHINE

SDM6T



- Product information
- Fixture display
- Case display

SDM6T PRODUCT INTRODUCTION

SDM6T is a 5-Axis dry-milling and wet-milling machine for dental CAD/CAM system with wide range of materials, featuring high accuracy, durable stability and excellent compatibility. It is an ideal choice for high-precision restorations including bridges, frames, splint, abutment bridge, implant bar, base and complicated operations like perforation. Equipped with premium spindle, imported core parts, smart CAM nesting system and intelligent touch screen, SDM6T offers better disc handling, wider material capabilities, automatic tool change to deliver a higher efficiency.

CAD/CAM DIGITAL PROCESSING



KEY FEATURES



This system supports international ISO standard G code, compatible with popular CAM software, such as HyperDent, SUM3D Dental, GO2dental etc.



Excellent and simple man-machine interface, touch screen control, simple operation, unique CAD/CAM processing strategy, no need for professional CNC programmers, one-button operation, stable operation.



The body structure adopts the industrial standard cast iron and cast aluminum structure, high rigidity, no deformation, stable precision, long service life. The mechanical transmission part adopts Taiwan/Germany C3 grade high precision ball screw and P grade linear guide rail.



It adopts high power frequency conversion and high speed tool changing spindle with large torque, high precision, and it can process various materials with high efficiency.

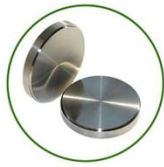


This machine is completely developed and designed by us, so we can provide customers with OEM service



The workbench has been newly upgraded to support round and square plates.

MILLABLE MATERIAL



Titanium



Square
titanium
disc



Wax



PMMA



PEEK

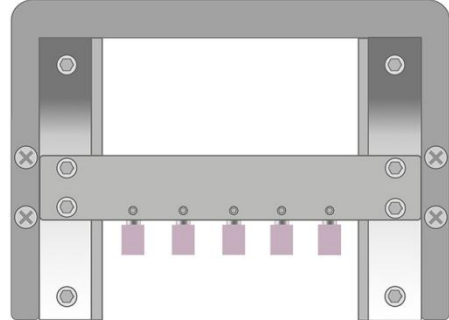
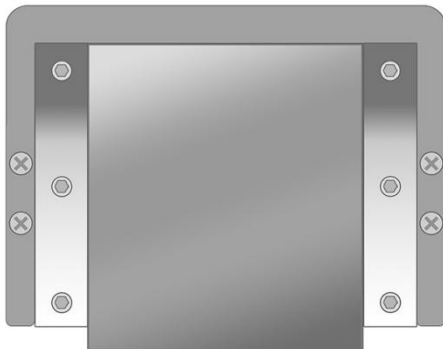
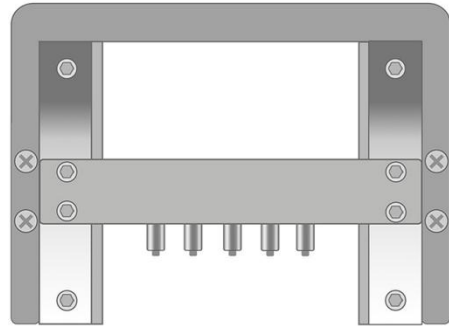
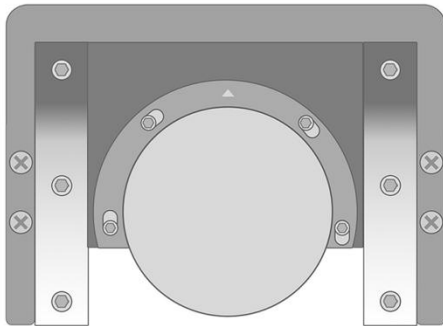


Titanium
column



E-Max

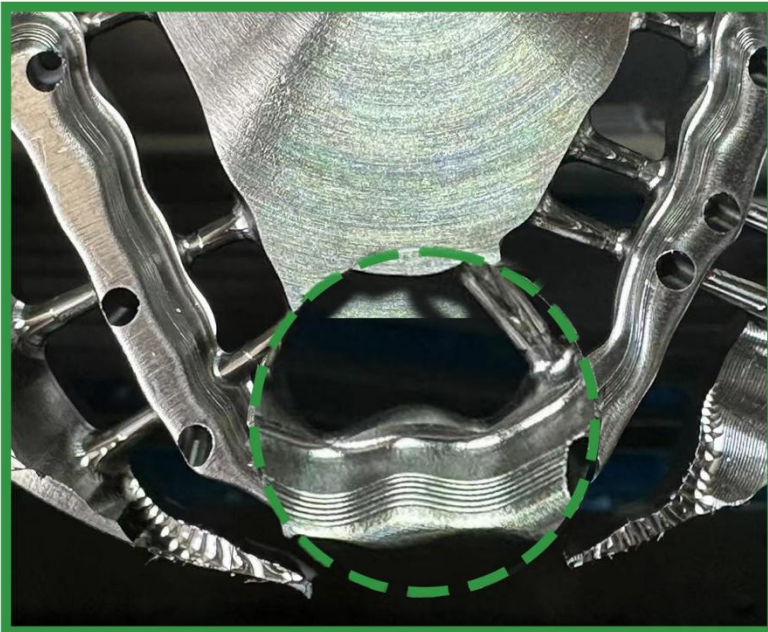
SDM6T HOLDER



MILLABLE RESTORATION



SDM6T CASE



SDM6T PRODUCT DETAILS

Name		5 Axis dental CAD/CAM milling machine
Model		SDM6T
Milling mode		Wet
Millable material		Titanium, CoCr, Premill, Glass Ceramics, Peek, Wax, PMMA,
Indications type		coping/crown, inlay/ onlay, abutment /implant bridge, veneer, premilled abutment, customized abutment, partial framework, surgical guide, model, full denture
Spindle power		4000W
Speed of spindle		3000-40000rpm/min
Spindle cooling		Water-cooled
X/Y/Z axis motor		Servo motor
A/B axis motor		Servo motor with High precision slope gear reducer
Rotation range	A axis	±360°
	B axis	±40°
Titanium hole position	5pcs for Arum holder or 5pcs for Medentika holder(optional)	
Number of burs(Tools) housed		28 pcs
Attachable bur(tool)	shank diameter	6mm
	Length	50mm
Tool change and check		Fully automatic
Compatible compressed air		0.6MPa
Loadable workpiece shape		
Disc	External Diameter	98~98.5mm
	Max Height	30mm
	Min. Height	10mm
Square plate	length	150mm
	width	140mm
	Max Height	30mm
	Min. Height	10mm
External dimensions	Length	760mm
	Width(Depth)	840mm
	Height	1750mm
Net Weight		800kg
Input Voltage		Single-phase 220V 50Hz/60Hz
Control command set		NC code
Positioning accuracy		0.005mm
Average milling time(single crown)	Zirconia	8-15 min
	Wax	3-6 min
	PMMA	8-10 min
	Titanium	10-15 min