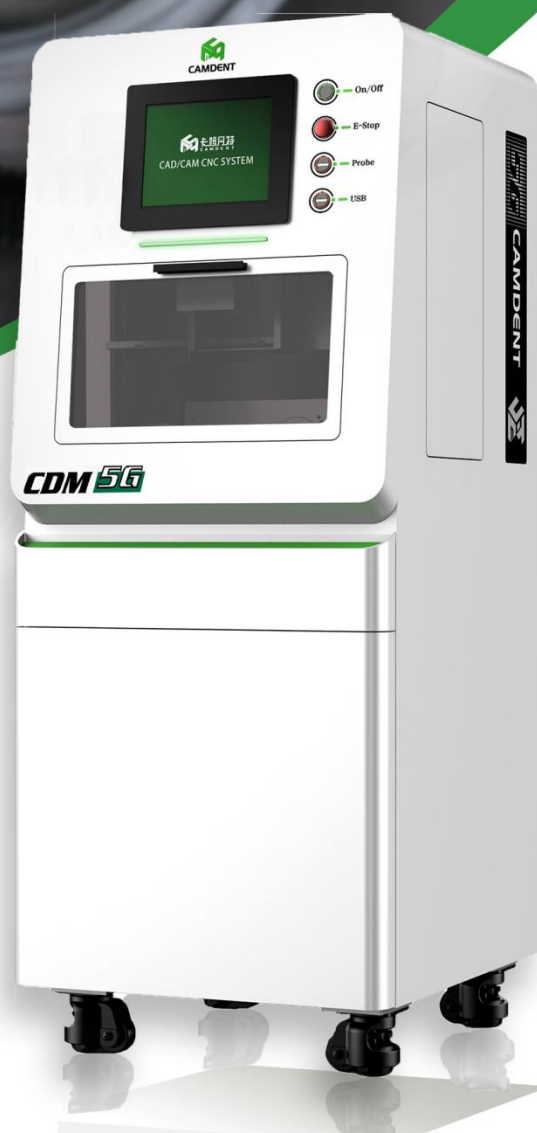


5-AXIS DENTAL CAD/CAM MILLING MACHINE

CDM5G

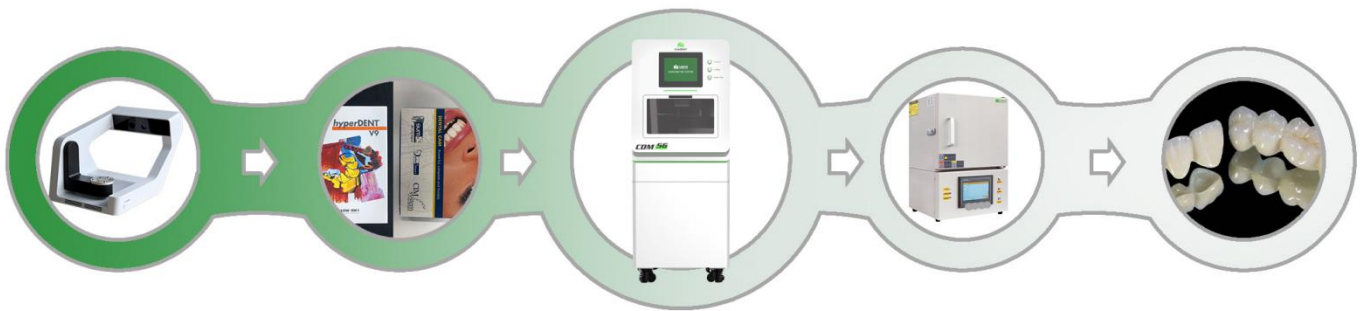


- Product information
- Fixture display
- Case display

CDM5G PRODUCT INTRODUCTION

CDM5G is a very cost-effective 5-axis dental milling machine suitable for dental clinics or dental laboratories. It supports dry and wet cutting and can efficiently work with zirconia, titanium and premill, glass ceramics, PMMA, PEEK, wax and other materials, and equipped with a multi-functional clamp, it is compatible with 98mm and 98.5mm diameter discs, C14 Glass Ceramics, Arum and Medentika titanium premills.

CAD/CAM DIGITAL PROCESSING



KEY FEATURES



This system supports international ISO standard G code, compatible with popular CAM software, such as HyperDent, SUM3D Dental.



Excellent and simple man-machine interface, touch screen control, simple operation, unique CAD/CAM processing strategy, no need for professional CNC programmers, one-button operation, stable operation.



The body structure adopts the industrial standard cast iron and cast aluminum structure, high rigidity, no deformation, stable precision, long service life. The mechanical transmission part adopts Taiwan/Germany C3 grade high precision ball screw and P grade linear guide rail.

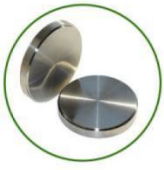


It adopts high power frequency conversion and high speed tool changing spindle with large torque, high precision, and it can process various materials with high efficiency.



This machine is completely developed and designed by us, so we can provide customers with OEM service

MILLABLE MATERIAL



Titanium



Zirconia



PMMA



PEEK



Wax

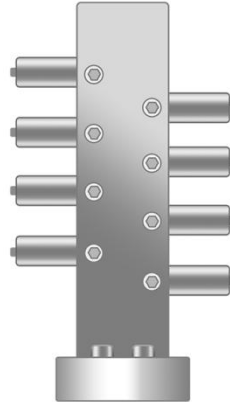
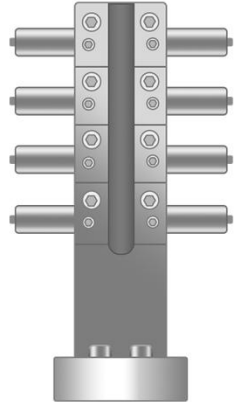
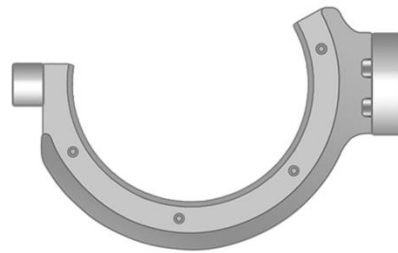
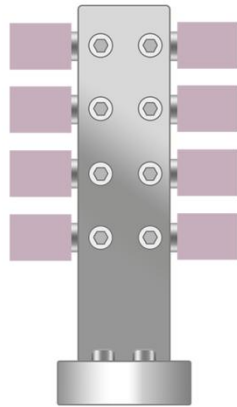


Titanium
Premill



E-Max

CDM5G HOLDER



MILLABLE RESTORATION



CDM5G CASE



CDM5G PRODUCT DETAILS

| | | |
|------------------------------|-------------------|--|
| Name | | 5 Axis dental CAD/CAM milling machine |
| Model | | CDM5G |
| Milling mode | | Wet / Dry |
| Millable material | | Premill ,Glass Ceramics,Zirconia,Wax,PMMA |
| Indications type | | Crown Bridge, Veneer, Inlay Onlay, Abutment, Denture, Screw-retained bridge, Model cast, Occlusal splint, Surgical guide |
| Spindle power | | 1.8KW (2.5KW optional) |
| Speed of spindle | | 3000-60000rpm/min |
| Spindle cooling | | Water-cooled |
| X/Y/Z axis motor | | Servo motor |
| A/B axis motor | | Servo motor with high precision harmonic gear reducer |
| Rotation range | A axis | ±360° |
| | B axis | ±30° |
| Number of burs(Tools) housed | | 14 pcs |
| Attachable bur(tool) | shank diameter | 6mm |
| | Length | 50mm |
| Tool change and check | | Fully automatic |
| Compatible compressed air | | 0.6MPa |
| Loadable workpiece shape | External Diameter | 98mm |
| | Max Height | 30mm |
| | Min. Height | 10mm |
| External dimensions | Length | 700mm |
| | Width(Depth) | 640mm |
| | Height | 1630mm |
| Packing dimension | | 900*900*1850mm |
| Net Weight | | 350kg |
| Gross weight | | 400kg |
| Input Voltage | | Single-phase 220V 50Hz/60Hz |
| Control command set | | NC code |
| Positioning accuracy | | 0.005mm |